

**1**

**OECD TEST FOR SCHOOLS – BASED ON PISA: BUILDING A GLOBALLY COMPETITIVE SYSTEM NOW**



**November 4, 2016, Northern Kentucky Children’s Home**

Our co-sponsored OECD Test for Schools- Based on PISA event is now official. **“Building a Globally Competitive System Now”!** Bring a team comprised of your school district leadership, along with community and business partners and join the NCKES and NWEA for an engaging presentation and conversation on: *Common Elements in a World Class Education System*. You’ll hear an inspiring presentation from Jack Dale, a renowned educator and trainer who used OECD Test for Schools- Based on PISA data to transform his district as superintendent at Fairfax County School District in Virginia. Also engage in a conversation about Every Student Succeeds ACT (ESSA) which presents unique challenges and opportunities for states with respect to how they select and use high school assessments. There are two sessions to choose from for this event:

- 1st Session - 10:30 AM -12:00 PM - Join us in the morning and stay for lunch**
- 10:30–Noon: OECD Test for Schools- Based on PISA Presentation and Discussion**
- 2nd Session – 1:00 PM – 2:30 PM have lunch then stay for the afternoon sessions**
- 1:00 PM – 2:30 PM OECD Test for Schools – Based on PISA Presentation and Discussion**

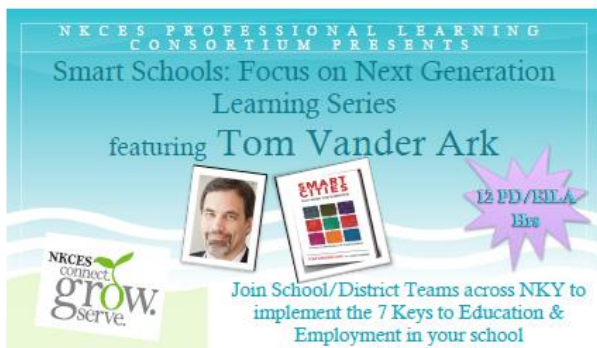
[Click here to register](#)

**2**

**SMART SCHOOLS: FOCUS ON NEXT GENERATION LEARNING SERIES**



**November 8, 2016, St. Elizabeth Education and Training Center (Formerly The Met Center)**  
**3861 Olympic Boulevard, Erlanger, KY 41018 8:30 AM – 3:30 PM**



**VENUE CHANGE!**  
Moved to SETC (formerly The Met Center)  
3861 Olympic Boulevard  
Erlanger, KY 41018

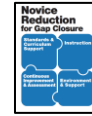
**Cost: \$200.00**  
**Includes book and lunch!**

Join in on our regional conversation to implement the 7 Keys to education and employment in Northern Kentucky. The workshop focuses School/District Teams on drafting a student focused plan for defining and developing 21<sup>st</sup> Century skills and learning that prepares students for future education and career. **It is not too late!** Call Penny at 859-442-8600 or email [penny.day@nkces.org](mailto:penny.day@nkces.org) to register for the last session.

# BE IN THE KNOW WITH NKCES

November 2016

## 3 NOVICE REDUCTION STRATEGIES FOR SCHOOL IMPROVEMENT



**November 10, 2016, Gateway, Boone Campus, 8:00AM-4:30PM**

The Novice Reduction Team will share with teacher leaders, principals, & district leaders the strategies that impact novice learners the greatest when implemented with fidelity. We will dive deep into the Key Core Work Processes at the classroom level with a focus on continuous improvement in order to empower our schools and districts to create and sustain plans that **WILL** make a difference in student performance.

School leadership teams may want to register early due to limited space.

<http://education.ky.gov/school/stratclsgap/Pages/default.aspx>

Click [HERE](#) for more information. Second session is full, third session to be announced soon.

## 4 NKY EDUCATION COUNCIL FALL COUNCIL MEETING

**November 10, 2016, Life Learning Center, 20 W 18<sup>th</sup> St, Covington, KY 41011 3:00PM-5:00PM**



PLEASE JOIN THE NKYEC and their Action Team Co-Chairs as they measure progress toward the regional goals.  
Please visit [nkyemeeting.eventbrite.com](http://nkyemeeting.eventbrite.com) to register or  
For Questions Contact:  
Chris Perkins at [cperkins@nkyec.org](mailto:cperkins@nkyec.org) or 859-282-9214

## 5 HIGH IMPACT PROFESSIONAL LEARNING INSTITUTE



**November 21, 2016, Lexington, KY 8:00AM-4:30PM**



This institute presents a proven framework for developing successful practices. After nearly two decades of studying instructional coaching with more than 50,000 coaches worldwide, Jim Knight and his colleagues have identified seven factors necessary for coaches to flourish and develop a coaching cycle that embeds learning and supports change.

For more details and to register please contact:

Jennifer Peace

[jennifer.peace@corwin.com](mailto:jennifer.peace@corwin.com)

805-358-5013

## 6 CITTS for INSTRUCTIONAL LEADERS

**November 21<sup>st</sup> from 8:30 AM-4:00 PM**

**Sullivan University Learning Center for Address: 207 Grandview Drive, Ft. Mitchell, KY 41017**



Register and learn about the following:

- Getting Started with Schoolnet
- How do I access reports to monitor how my students are performing?
- How do I generate reports to get additional information?
- Understanding What Data Is Available to Teachers
- How do I create and administer assessments to monitor student learning?
- How do I utilize CIITS to support instructional planning in my district?

**[CLICK HERE TO REGISTER](#)**

# BE IN THE KNOW WITH NKCES

November 2016

## 7 NORTHERN KENTUCKY EDUCATION COUNCIL'S COLLEGE AND CAREER READINESS SYMPOSIUM



**November 29, 2016, N KY University Center Ballroom, 8:00 AM – 3:30 PM**

Northern Kentucky College and Career Readiness Symposium: Keynote speakers include Kris Kimel, President, KY Science and Technology Corporation, Tom Welch, President, Tom Welch Consulting. An exciting day of learning that will address topics such as 21<sup>st</sup> Century Skills, Career Pathways, Dual Credit/Early College, Regional Career Sectors, and Career Exploration Experiences. Cost: \$15.00 per person with lunch included.

For more details and to register contact:  
Chris Perkins at [cperkins@nkyec.org](mailto:cperkins@nkyec.org) or 859-282-9214

## 8 KY Association of School Superintendents



**December 4 – December 7, 2016 Griffin Gate Marriott, Lexington, KY 40511**  
**Begins Sunday, December 4th at 4:30 PM, December 5 – 7th 8:00AM-4:30PM**

On Sunday, the 4th, the opening keynote speaker will be Linda Darling-Hammond (President of the Learning Policy Institute and Charles E. Ducommun Professor of Education Emeritus at Stanford University where she is Faculty Director of the Stanford Center for Opportunity Policy in Education). Monday, the 5th, will be a time for networking and sharing innovative best practices among our districts and coops in roundtables, panels, and presentations. Tuesday, the 6th, we will host the Commissioner's Annual Superintendent Summit for KDE. Wednesday, the 7th, will be focused on political advocacy and lobbying with comments from Senate and House Leadership along with lobbying training provided for our membership. We will also recognize the 2017 KY Superintendent of the Year on Wednesday with our partners from KASA. The **December 6th Superintendent Summit is for superintendents only.** [Click HERE to register](#)

## 9 BETTER CONVERSATIONS with Tricia Skyles (Continuation of Coaches Series)



**December 15-16, 2017, Gateway Community & Technical College, Florence from 8:00AM-3:30PM**

In **Better Conversations**, Jim Knight reveals why and how true dialogue will improve professional performance, job satisfaction, and classroom instruction. Together with this Reflection Guide, the two books provide a brilliant, scaffolded professional learning experience on a topic central to learning, and central to life.

During the *Better Conversation* workshop, participants will:

- Engage in surveys, take stock, and record video in order to get real about their current beliefs and abilities. Guiding questions include: How do you measure up when it comes to empathy, asking better questions? Finding common ground?
- Learn about the 10 habits of being an effective communicator, and put them into practice. Guiding questions include: Are your conversations focused on others 50 percent of the time? What things typically distract you from being fully present?

Fee:  
**\$200.00 Includes book**

[Click HERE to register](#)

**Lunch is on your own!**  
**Feel free to bring your own drink and snack!**

## 10 EXPLICIT INSTRUCTION FOR SPECIAL EDUCATION with ANITA ARCHER

January 5 – 6, Gateway Community & Technical College, 8:30AM-3:30PM



<p>Gateway College 500 Technology Way Florence, KY 41042</p>
<p>Thursday, January 05 and Friday, January 06</p> <p>8:30 A.M. – 3:30 P.M.</p> <p>MEMBERS: \$25.00 NONMEMBERS: \$100.00</p>
<p>CONTINENTAL BREAKFAST LUNCH IS PROVIDED</p>

This highly practical and accessible training gives *Special Education Administrators and Special Education teachers* the tools to implement explicit instruction in any grade level or content area. The authors are leading experts who provide clear guidelines for identifying key concepts, skills, and routines to teach; designing and delivering effective lessons; and giving students opportunities to practice and master new material. Sample lesson plans, lively examples, and reproducible checklists and teacher worksheets enhance your learning experience. [Click HERE to register](#)



### JOIN THE UPCOMING PLC'S!

- TITLE I & TITLE II** – November 18, 2016 – 8:30 AM – 9:45 AM, NKCES, PD Room
- NKY New Teacher** – November 21, 2016 4:00 – 5:00 PM, Lloyd High School Library
- PL Committee** – November 18, 2016 10:00 AM – 12:00 PM, NKCES PD Room
- Physical Education Regional PLC** – November 28, 2016 4:00 – 5:30 PM NKCES PD Room
- Grants Consortium** – November 2, 2016 – 10:30 AM Erlanger City Building
- EL/Title III** – November 17, 2016 – 10:00 AM – 11:30 AM NKCES PD Room
- Middle School Leadership Symposium/NKAG** - December 8, 2016, 9:00 AM – 12:00 PM, Thomas Moore



### STATE PL OPPORTUNITIES

- The Speed of Trust – November 10, 2016 – 1:00 PM – 3:00 PM, Corbin Center, Corbin, KY [Click Here to Register](#)
- 2<sup>nd</sup> Annual SESC Poverty Institute – November 15, 2016 – 8:30 AM – 3:30 PM, Corbin Center, Corbin, KY [CIITS Registration](#)
- Get In Focus With KASC – Academy November and December dates and locations: [Click Here to Register](#)

### NKCES UPCOMING BOARD OF DIRECTORS MEETING

NKCES BOARD OF DIRECTORS MEETING – November 9, 2016

**NKCES PD ROOM**

Superintendents' PLC – 8:30 AM-9:30 AM

Board of Directors – 10:00 AM-12:00 PM

Click [HERE](#) for information and agenda



## FALL TRAINING OFFERINGS

Click [HERE](#) to register

### [NOVEMBER 1, 2016 LOW INCIDENCE & ASD PLC](#)

Tuesday November 1, 2016 from 3:00 PM to 4:30 PM EDT

This regional PLC is designed to connect special educators who work with students with low incidence disabilities and/or ASD. This PLC will work to identify areas of need and focus for future professional learning opportunities.

### [NOVEMBER 9, 2016 NKCES BOARD OF DIRECTORS MEETING - NOVEMBER MEETING](#)

Wednesday November 9, 2016 from 8:30 AM to 3:00 PM EST

Superintendents Meeting-8:30-9:30 Board of Directors-10:00-12:00 Superintendent Roundtable-12:00-3:00

### [NOVEMBER 10, 2016 MIDDLE SCHOOL MATH PLC](#)

Thursday November 10, 2016 from 3:30 PM to 4:30 PM EST

Within our region we have the opportunity to combine Resources, have a voice in targeted Professional Development and share ideas with fellow teachers.

### [NOVEMBER 14, 2016 NKY INSTRUCTIONAL COACHES' PLC](#)

Monday November 14, 2016 from 2:30 PM to 4:00 PM EST

Please join us as we begin a regional dialogue and resource sharing to better supports teachers and great classroom instruction in NKY.

### [NOVEMBER 28, 2016 - PHYSICAL EDUCATION REGIONAL PLC MEETING](#)

Monday November 28, 2016 from 4:00 PM to 5:30 PM EST

2016 - 2017 PHYSICAL EDUCATION REGIONAL PLC NKCES PD - Room 4:00 PM - 5:30 PM PLC Lead: Angela Hedenberg

### [NOVEMBER 30 - DECEMBER 1, 2016 CBB ADDITION & SUBTRACTION ELEMENTARY](#)

Wednesday November 30, 2016 at 8:30 AM EST

-to-

Thursday December 1, 2016 at 3:30 PM EST

This 2 day training will focus on building a strong conceptual foundation for mathematics using the Concrete Representational-Abstract sequence of teaching/learning/C-R-A). Participants will examine student misconception, revisit their own understanding of KCAS and Practice Standards all in an effort to promote higher-order student thinking.

### [DECEMBER 14, 2016 NKCES BOARD OF DIRECTORS MEETING - DECEMBER MEETING](#)

Wednesday December 14, 2016 from 8:30 AM to 3:00 PM EST

Superintendents Meeting-8:30-9:30 Board of Directors-10:00-12:00 Superintendent Roundtable-12:00-3:00